



## MINUTES OF 66TH IFFTI EXECUTIVE COMMITTEE MEETING

<b>Meeting</b>	<b>66th IFFTI Executive Committee Meeting (Online)</b>
<b>Date</b>	<b>12<sup>th</sup> February 2025</b>
<b>Time</b>	<b>10 AM GMT</b>
<p><b>1. Attendance Confirmed:</b></p> <p><b>Chairperson-IFFTI</b></p> <ul style="list-style-type: none"> <li>Prof. Robyn Healy, RMIT University, Australia</li> </ul> <p><b>Regional Members</b></p> <ul style="list-style-type: none"> <li>Prof. Liz Barnes, MMU, UK – Deputy Chairperson-IFFTI, Deputy Chair, Membership Sub-Committee</li> <li>Prof. Anne Porterfield, NCSU USA – Member</li> <li>Prof. Jose Teunissen AMFI, The Netherlands – Chair, Education Initiative Sub-Committee</li> <li>Prof. Gargi Bhaduri, KSU, USA – Member</li> <li>Prof. Margo Barton, Otago Polytechnic, New Zealand- Chair, Membership Sub-Committee</li> <li>Ms. Aditi Srivastava Pearl Academy, India – Chair, Finance Sub-Committee.</li> <li>Circe Henestrosa, LASALLE College of the Arts, Singapore- Member</li> <li>Prof. Norio Nakanishi, Bunka Gakuen University, Japan – Member</li> <li>John Lau, LCF, UK – Member, Hosting 2025 IFFTI Annual Conference</li> <li>Prof. Jun Li, Donghua University, P.R. China – Deputy Chair, Finance Sub-Committee</li> <li>Prof. Carolyn Hardaker, DMU, UK- Member</li> <li>Laura Washington, FDS TAFE Australia- Member</li> </ul> <p><b>Co-opted Member</b></p> <ul style="list-style-type: none"> <li>David Zajtmann, IFM, France- Chair, Research Sub-Committee</li> <li>Ms. Corinna Erken, RMIT University, Vietnam-Hosting 2026 IFFTI Annual Conference</li> </ul> <p><b>General Manager-IFFTI</b></p> <ul style="list-style-type: none"> <li>Surbhi Nijhawan- General Manager, IFFTI</li> </ul> <p><b>Apologies</b></p> <ul style="list-style-type: none"> <li>Dr. Helen Gaudette, FIT, USA- Member</li> </ul>	
<p><b>2. Welcome</b></p> <p><b>2.1</b> The Chairperson, Prof. Robyn Healy, commenced the meeting by warmly welcoming all members and expressing appreciation for their dedication across time zones. She emphasised the importance of engaging in meaningful discussions on matters for the foundation.</p>	
<p><b>3. Chair’s Report</b></p> <p><b>3.1 Remembering Ms. Janice Mee</b> (De Montfort University, UK) - IFFTI Emeritus Member</p> <p><b>3.2 Distinguished IFFTI Member:</b> Prof. Robyn Healy shared the list of individuals who have accepted the honour of Distinguished Member. An official invitation has been extended for Distinguished members to attend the IFFTI 2025 Annual Conference at the London College of Fashion (LCF).</p> <p>LCF has graciously offered a 50% discount on the registration fee at the IFFTI member rate for all Distinguished Members. Additionally, IFFTI will sponsor their attendance at the Gala Dinner as part of this recognition.</p> <p>The Committee acknowledged and appreciated LCF’s support for this initiative.</p> <p><b>3.3 2028 IFFTI Annual Conference - Expression of Interest</b></p> <p>Prof. Robyn Healy informed the committee that the Expression of Interest (EOI) process for hosting the 2028 IFFTI Annual Conference will be shared with IFFTI members during the Annual General Council Meeting at LCF.</p> <p>All submitted proposals will be reviewed by three nominated members of the Executive Committee, ensuring a fair and thorough evaluation process in line with IFFTI’s guidelines for selecting the host institution.</p> <p><b>3.4 Discussion on the Attendance of Delegates at the IFFTI Conference:</b></p> <p>Prof. Robyn Healy emphasised the need to reassess IFFTI’s membership structure to align with the evolving landscape of higher education and institutional capacities. Given the changing times, she suggested that membership offerings be structured according to the institution’s size to ensure inclusivity, accessibility and engagement.</p> <p>Building on discussions from the 64th EC Meeting, the following steps were outlined:</p>	



Prof. Liz Barnes suggested a comparative analysis of subscription fees and benefits across similar organizations.

Prof. Robyn Healy proposed a regional evaluation of membership benefits and a tiered structure for different subscription levels.

Prof. Robyn Healy, Prof. Liz Barnes, and Surbhi Nijhawan will collaborate on a revised membership model, to be discussed at LCF and presented at the AGM.

A detailed discussion will be held at the IFFTI Conference at LCF, with a formal proposal prepared for the AGM.

### **3.5 Enhancing Inclusivity: Invite Faculty from non-member Universities to Attend IFFTI Conferences Near the Host Institute**

Prof John shared that LCF will be inviting faculty from the University of East London, Newham College and Morley College

### **4. Status of Preparation 2025 IFFTI Annual Conference at LCF, UK**

**4.1** Prof. John Lau shared a presentation on the preparation for the IFFTI 2025 Conference. The detailed presentation is placed in **Annexure 1**.

### **5. Status of Preparation 2026 IFFTI Annual Conference at RMIT University, Vietnam**

**5.1** Ms. Corinna Erken shared a detailed and elaborate presentation on the IFFTI Conference 2026 to be hosted by RMIT, Vietnam, placed in **Annexure 2**.

The Chair emphasized the importance of adhering to set timelines for processes and submissions, ensuring smooth operations and avoiding delays. For the Vietnam conference, early submission is critical due to the requirement for government clearances and approvals well in advance. Compared to previous IFFTI conferences, this will require earlier planning and submission timelines.

### **6. Update on Finance Sub-Committee**

**6.1** Ms Aditi Srivastava provided an update on the IFFTI Finance Sub-Committee and presented the budget for the year 2025 (**Annexure 3**). While presenting the budget, Aditi highlighted that certain scheduled payments remain unissued due to the absence of invoices, including:

- Invoice awaited from Otago Polytechnic, NZ for Conference Proceedings 2023.
- Invoice awaited from London College of Fashion (LCF), UK for advance payment towards the 2025 conference.

The Chair proposed setting a specified timeframe for raising invoices and making payments towards them to ensure timely processing and accurate financial reporting. Delayed claims may create a false impression of budget surplus and create challenges in budget planning.

The Committee agreed to implement this policy to enhance financial transparency and protect IFFTI's limited funding resources while continuing to support institutions effectively.

### **7. Update on Membership Sub-Committee**

**7.1** Prof. Margo shared a detailed Presentation on the Membership Sub-Committee is placed in **Annexure 4**.

**7.2** Circe Henestrosa inquired about inviting universities, such as Universidad de Monterrey, are interested in attending the conference to understand IFFTI's work. The Chairperson proposed inviting non-IFFTI members to attend the conference with a non-member registration fee. To enhance their experience and encourage future membership, the importance of a Facilitator is to support their participation and understanding of IFFTI. This initiative aims to showcase the value of IFFTI, fostering engagement and increasing potential membership interest.



## 8. Update on Education Initiative Sub-Committee

**8.1** Prof Jose shared a detailed presentation on the Education Initiative Sub-Committee is placed in **Annexure 5**.

She shared that they are currently collaborating on a European project with several universities focused on fashion skills and programs. She is exploring the possibility of some of these universities joining IFFTI in the near future and believes that having Eastern European universities involved would benefit IFFTI, and she plans to discuss this further in an upcoming meeting.

**8.2** Prof. Jose shared that Matthijs Criete from the International Apparel Federation (IAF) will be attending the IFFTI Annual Conference at LCF, as IAF is keen on strengthening alignment with IFFTI.

**8.3** Professor Robyn Healy suggested that since IFFTI is not hosting an education workshop, we could invite Matthijs Criete to discuss opportunities with the International Apparel Federation instead. This approach ensures that members continue to engage in educational discussions, aligning with their expectations while offering a more impactful and relevant session.

Matthijs could lead a conversation alongside Prof. Jose, and other members of the Organizing Committee. The Chair requested that John also include this in the LCF Conference Schedule.

## 9. Update on Research Sub-Committee

**9.1** Prof. David shared a detailed presentation on the Research Sub-Committee is placed in **Annexure 6**

## 10. Additional Points:

**10.1** The Chair provided an opportunity for members to share any updates, initiatives, or announcements from their universities or personal insights. Acknowledging the depth of discussions throughout the meeting, the Chair emphasised that this was an open moment for additional contributions before concluding the session.

**10.2** Prof. David Zajtmann shared that his colleague, Leyla Neri, Head of the Master of Fashion Design program, is leading the launch of a Doctoral Studies Program in Fashion Design. They are also opening positions for this program.

The initiative is in collaboration with the Jean Prouvé Chair at the Conservatoire National des Arts et Métiers (CNAM), a prestigious French institution established during the French Revolution. It is a joint effort involving Institut Français de la Mode, and a distinguished Public University in Paris.

Prof. Zajtmann expressed his eagerness to present this announcement at the IFFTI LCF Conference 2025.

**10.3** Prof. Robyn Healy suggested creating a dedicated platform—such as a notice board or designated moments during the conference—to showcase initiatives from member universities. This would provide an opportunity for institutions to share their ongoing projects, fostering engagement, discussions, and potential collaborations.

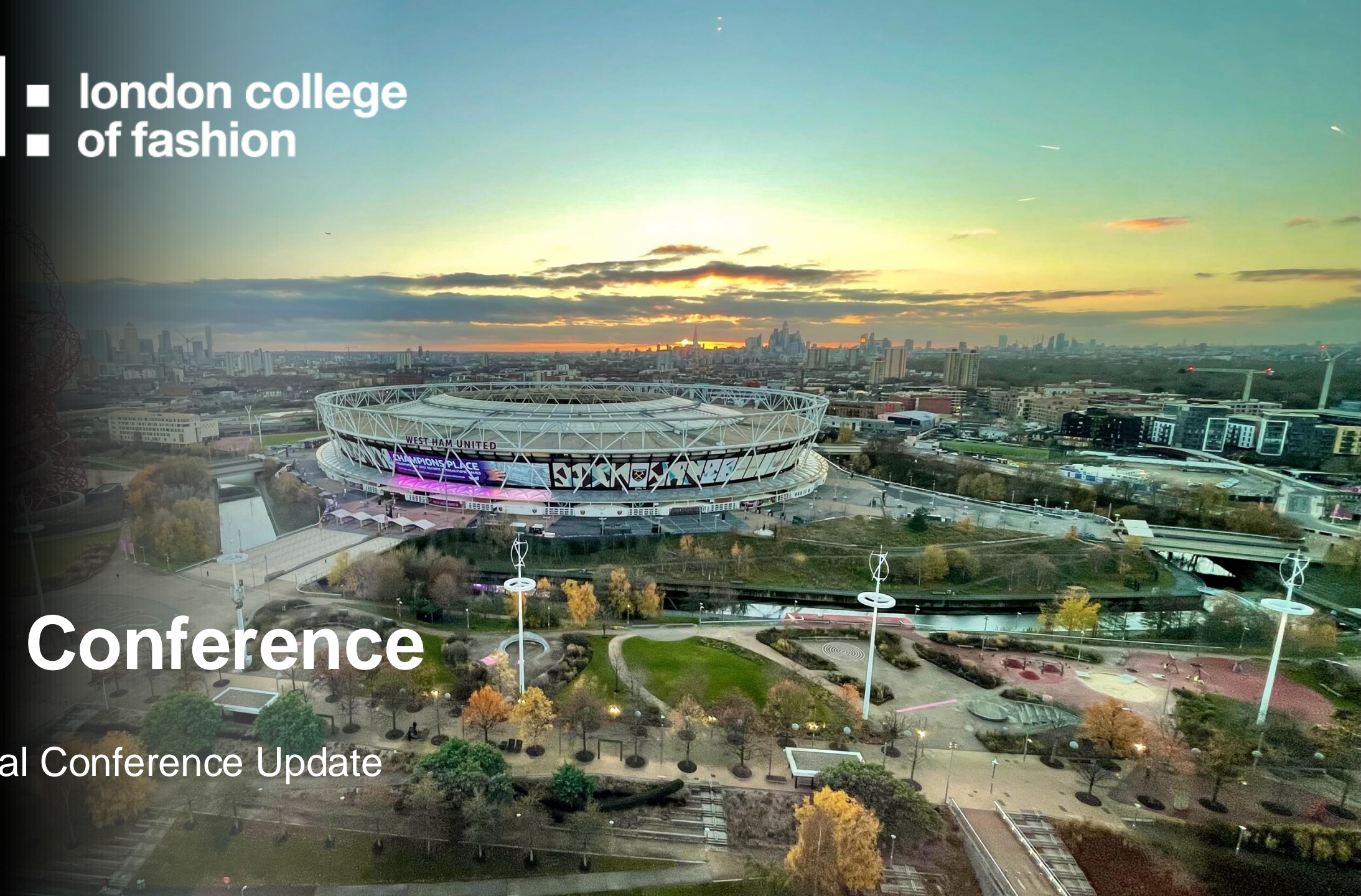
Members were encouraged to identify relevant initiatives from their universities that could be featured within the IFFTI community.

**11.** The Chair thanked the committee for their contributions, acknowledging IFFTI's progress and the enthusiasm of Executive members. While work remains on growing membership and advancing initiatives, she looks forward to seeing members in London.

**ual** london college  
of fashion

# IFFTI Conference

27<sup>th</sup> Annual Conference Update



# Update

1. Final submission statistics
2. Registrations
3. Support request
4. Supporting local institutions
5. LCF optional activities
6. Gentle reminders

# Final submission statistics

# Final submission statistics

Type of submission	Total number
Full and development papers	99
Full papers (online presentations)	5
Workshop proposals	17
Poster presentations	8
Installations	2
<i>Rejections</i>	<i>(82)</i>
<b>TOTAL ACCEPTANCES</b>	<b>131</b>

# Final submission statistics

- **Stage 1** – 369 abstracts received
- **Stage 2** – 277 abstracts accepted
- **Stage 3** – 213 final submissions
- **Stage 4** – 131 final submissions accepted
  
- **Stage 1 to 2** – 75% acceptance rate
- **Stage 2 to 3** – 77% final submission rate
- **Stage 3 to 4** – 62% acceptance rate



# Registrations

# Registrations

- 34 free ticket registrations
- 14 member registrations
- 2 non-member registrations
- 3 student registrations
- 1 day rate registration
- **Total 54 registrations**
  
- *Not including any LCF or Distinguished Members registrations*

# Supporting local institutions

# Supporting local institutions

## Newham College

- A local college with links to LCF. The college offers courses in fashion and tailoring, supporting learners gain skills and qualifications to progress onto further study or work

## Morley College

- The college offers a wide range of Further and Higher Education courses, with particular emphasis on supporting learners gain access to higher education

## University of East London

- UEL is a university close to LCF and offers a range of UG and PG fashion courses, serving the local community. Their offer is expanding and may consider joining as members.

# Support request

# Support request

## Executive Committee Dinner

- Confirmation of numbers for dinner on Monday evening

## Chairs for panel presentations

- Organise a team of panel Chairs before the conference
- Chairs will receive a briefing before the conference

## Students

- Gathering for students on Gala dinner night?

## LCF International Partnerships Reception

- Invitation-only event
- Compiling a guest list

# LCF optional activities

# LCF optional activities

A range of activities will be available for the conference delegates to enjoy on the final day. All activities are sign up with limited numbers for each activity. There are no additional charges to take part, and lunch is provided for all on-campus activities.

- Centre for Sustainable Fashion
- Fashion Innovation Agency
- London College of Fashion Archive
- School of Design and Technology
- Virtual Production Lab
- AI Fashion with FAIRRE
- Visit to YKK Showroom in Shoreditch



# Gentle reminders

**IFFTI 2025**

<b>Monday – 24 March</b>	<b>Tuesday – 25 March</b>	<b>Wednesday – 26 March</b>	<b>Thursday – 27 March</b>	<b>Friday – 28 March</b>
Registration for Executive Committee	Registration	Registration	Registration	LCF Activities (optional)
Sub-Committee Meetings	Opening Ceremony with Vice Chancellor and welcome from Head of London College of Fashion  IFFTI General Council Meeting	Presentations and Workshops	Presentations and Workshops	Archives Research Centres Schools  Cultural activities
<i>Lunch</i>	<i>Lunch</i>	<i>Lunch</i>	<i>Lunch</i>	<i>Lunch for participants</i>
Executive Committee Meeting	Keynote Panel	Presentations and Workshops	Presentations and Workshops	
Executive Committee Campus Tour	Workshops		Closing Executive Committee Meeting	
Executive Committee Welcome Dinner	Welcome Reception for all participants  Poster presentations  Gallery Exhibitions	LCF International Partnerships Reception	Gala Dinner & Award Ceremony	

# Guidance for Executive Committee

## Your stay

- The Westbridge Hotel – Stratford High Street
- 15 minute walk from hotel to LCF
- Queen Elizabeth Olympic Park – gardens and sports facilities
- Westfield shopping centre
- 15 minutes into central London (Stratford to Bond St)

## Attending the Conference

- Advise us on arrival dates and times
- Names of your guests and Distinguished Committee members

# Gentle reminders

## Important dates for the diary

- **20 December** - *reviewers notified of allocations*
- **24 January** - *all reviews completed*
- **31 January** - *notification of acceptance sent to authors*
- **28 February** - author to have registered for conference
- **14 March** - publication of final programme and agenda
- **24 March** - conference open

**Thank you**

**arts.ac.uk**

---

**ual:** london college  
of fashion

# IFFTI Annual Conference 2026 @ RMIT Vietnam

**RMIT Vietnam**



**Introducing our University**





# RMIT is a global university of technology, design and enterprise

RMIT plays a central role in delivering quality applied education in **Asia for 35 years**, and within the **wider Asia-Pacific for 136 years**.



More than

**96,000**

students

Over 12,000 students  
and 1000 staff in  
Vietnam



**7,458**

students through partners  
in **Singapore, mainland  
China, Sri Lanka &  
Hong Kong** in 2021

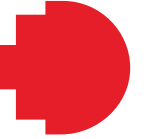


**510,000**

alumni worldwide  
in 149 countries

**22,000 alumni in Vietnam**





# RMIT ranks 123<sup>rd</sup> globally and 10<sup>th</sup> in Australia in the QS World Rankings 2024



**450+**

**internationally  
recognised  
qualifications**



Among the world's

**Top 100**

**Graduate Employment Rate**

QS World University Rankings 2022



**Top 1%**

**universities globally**

QS World University Rankings 2024



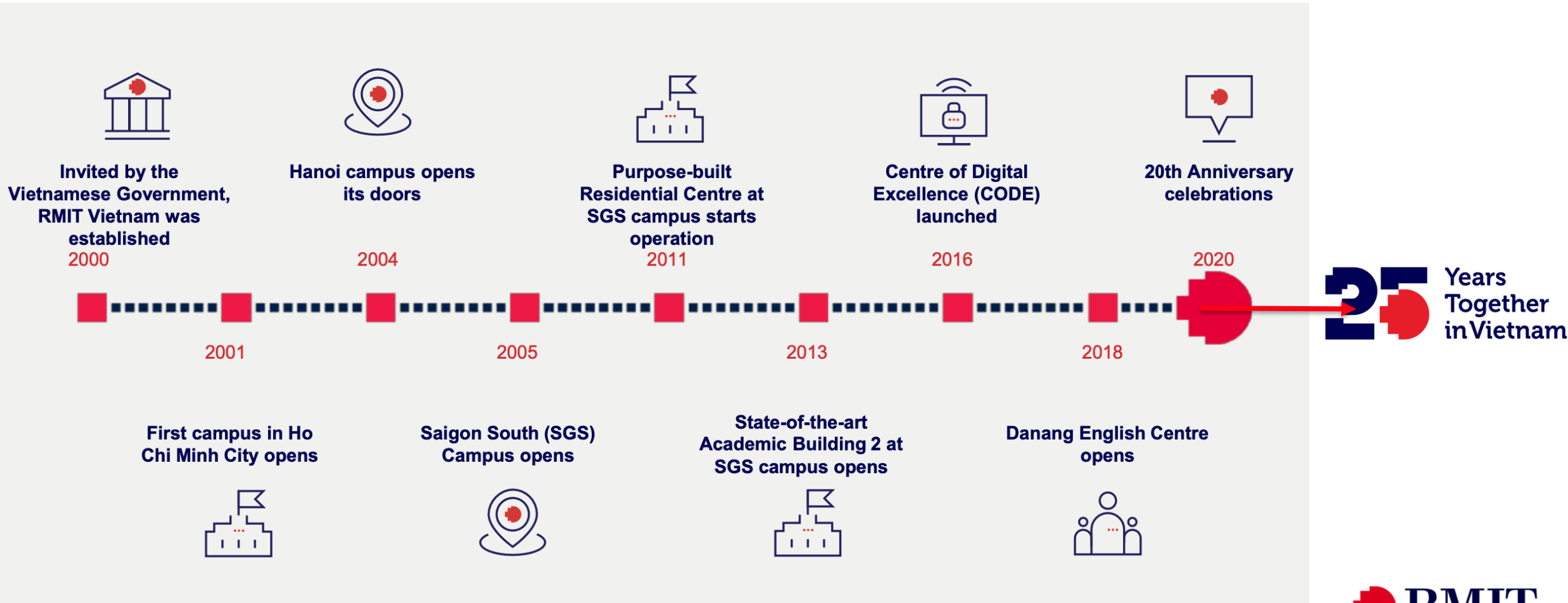
**1<sup>st</sup> Globally**

in the 2023 THE Impact Rankings for  
reducing inequality (**Sustainable  
Development Goals 10**)

Times Higher Education University Impact Rankings 2023

RMIT University has a global reputation for excellence in professional and vocational education, applied research, and engagement with the needs of industry and communities world-wide.

# RMIT has been invested in Vietnam for 25 years





# RMIT UNIVERSITY

School of  
Communication  
& Design

3868 Students

113 Staff



Professional Communication



Fashion (Enterprise)

242 Students



Digital Film & Video



Languages



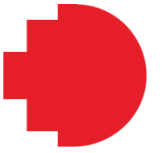
Design Studies



Games Design



Design (Digital Media)



# RMIT Vietnam Bachelor of Fashion

Bachelor of Fashion (Merchandise Management) launched in 2015

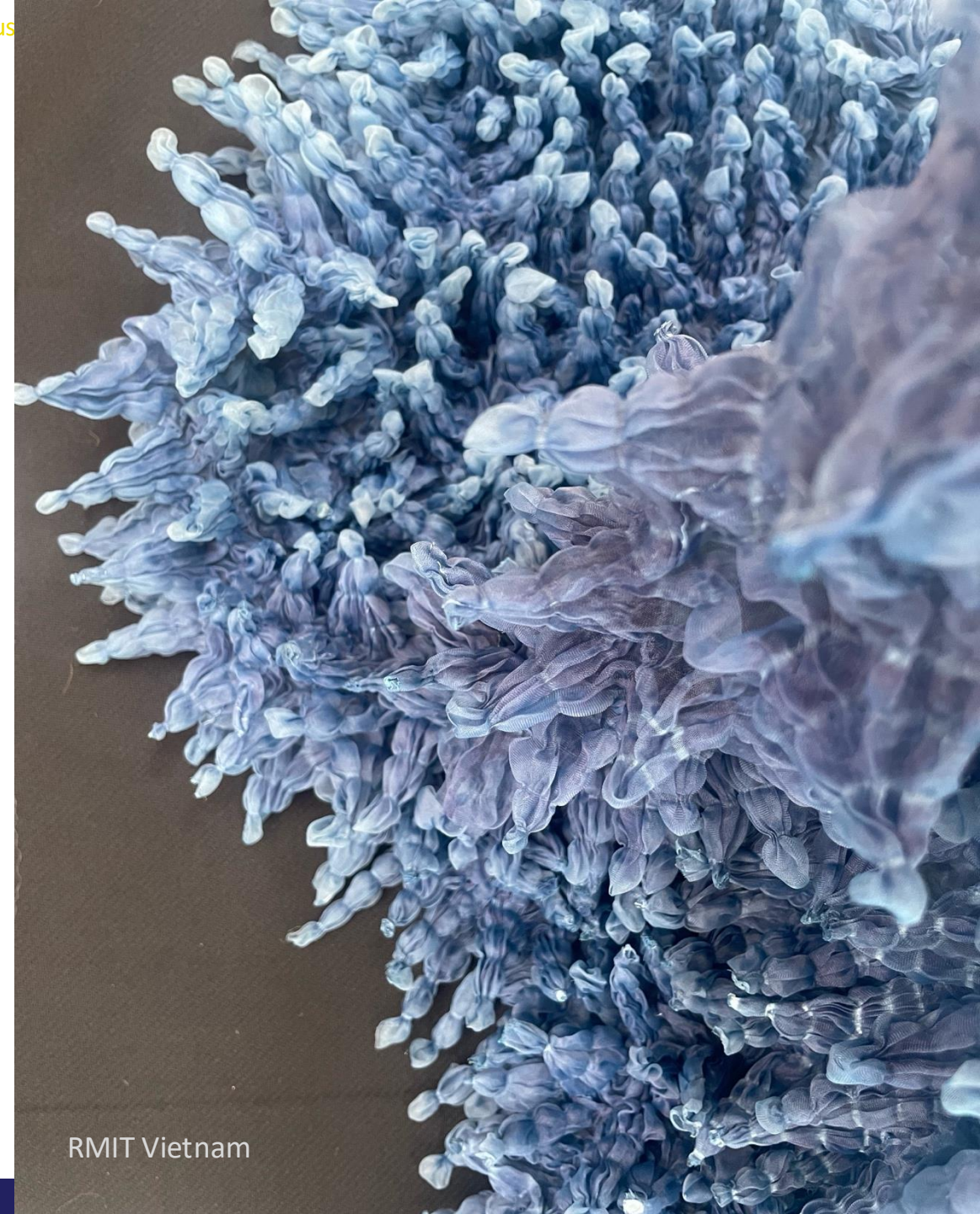
replaced by the Bachelor of Fashion (Enterprise), launched in 2020

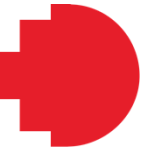


## IFFTI 2026 Theme

# Cultural Connections for Sustainable Fashion Futures: Rebuild, Renew, Regenerate

This theme aims to explore the intersection of cultural heritage and indigenous knowledge as a means to offering solutions for the planetary polycrisis faced by the fashion industry.





# Cultural Connections for Sustainable Fashion Futures: Rebuild, Renew, Regenerate

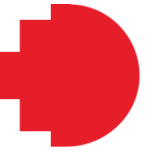
By embracing the theme of "Rebuild, Renew, Regenerate," the theme provokes a **shift beyond conventional sustainable practices**, recognizing that reducing and recycling alone will not suffice to address the current challenges.



Vietnam



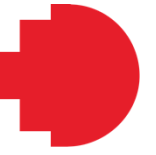
RMIT Vietnam – Material Futures Research with  
Community



# Cultural Connections for Sustainable Fashion Futures: Rebuild, Renew, Regenerate



RMIT Vietnam – Material Futures  
Research with Community



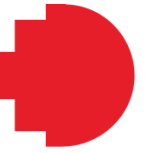
# Cultural Connections for Sustainable Fashion Futures: Rebuild, Renew, Regenerate

The focus is on how the fashion industry can adopt sustainable processes while also considering **the need to undo past damages and redefine the concept of "fashion" in a future marked by resource scarcity and conflicting demands.**



RMIT Vietnam Student Work –  
Material Futures





# Cultural Connections for Sustainable Fashion Futures: Rebuild, Renew, Regenerate

The conference emphasizes the significance of cultural connections, urging participants to draw upon the **heritage and traditions of diverse societies** to foster a creative and thriving fashion industry.

By fostering diversity, individuality, and cultural expression, the aim is to create an industry that transcends the confines of fashion cities and embraces a sustainable and inclusive future.



## Context

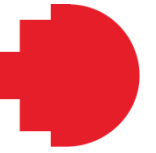
The Fashion Industry is deeply entangled in the **planetary polycrisis** as both a driver and vulnerable to collapse due to its pollution, exploitation of resources, and dependence on fragile global production networks.

We urgently need to envision and implement new local fashion systems of production, use, and recirculation. For this we need to engage communities and industry to develop place-based responses.

We need to redefine "fashion" in a resource-scarce future by addressing the concept of fashion in the context of resource scarcity and explore conflicting demands and finding innovative solutions

Artist Thu Trần



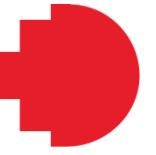


# Cultural Heritage, Innovation & Collaboration



With the theme we also want to highlight the role of cultural heritage and indigenous knowledge and encourage participants to draw upon diverse traditions for a thriving fashion industry in order to create a sustainable and inclusive future that fosters diversity, individuality, and cultural expression in the industry and goes beyond current centres of knowledge and production.





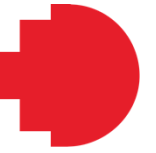
# Vietnam & Ho Chi Minh City

Vietnam's unique juxtaposition as one of the largest manufacturing countries and one of the top countries affected by climate change provides a compelling context to explore the theme.

Vietnam has a booming fashion manufacturing industry with some of the most up-to-date and environmentally friendly factories near HCMC, providing delegates with the opportunity to connect with the industry and see the latest innovations in manufacturing.

HCMC offers a unique blend of cultural heritage and progress. Vietnam's emerging fashion industry and its growing commitment to sustainability make it an ideal backdrop for discussions and initiatives aimed at rebuilding, renewing, and regenerating the fashion industry.

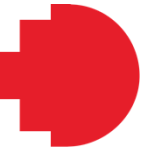




# Vietnam

Vietnam provides an inspiring environment for the conference and offer a range of complementary activities to enhance the experience, such as visits to local industrial manufacturers vs. traditional textile villages, the Mekong Delta, fabric markets, street food tours etc.





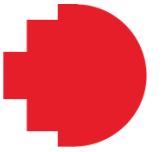
# Ho Chi Minh City



# Ho Chi Minh City

# Accommodation HCMC





# Accommodation HCMC

Hotel Name	Distance to RMIT D7 by taxi	Room type 1	Room Type 1 AVG RATE	USD
<b>IN the RMIT hotel directory list</b>				
ibis Saigon South	15 mins	Standard: Queen Bed / Twin	2,200,000	<b>86</b>
Caravelle Hotel	20 mins	Deluxe King Bed / Twin Room	5,980,000	<b>233</b>
JW Marriott Hotel & Suites Saigon	25 mins	Deluxe King Bed / Twin Room	6,600,000	<b>257</b>
Hotel des Arts Saigon - MGallery	25 mins	Deluxe King Bed / Twin Room	5,300,000	<b>207</b>
Sofitel Saigon Plaza	20 mins	Superior King Bed / Twin Room	5,500,000	<b>215</b>
Mai House Saigon	25 mins	Deluxe King Bed	4,600,000	<b>179</b>
<b>OUT of the RMIT hotel directory list</b>				
REX Hotel	20 mins	Superior King Bed / Twin Room	5,000,000	<b>195</b>
The Myst Dong Khoi	20 mins	Double/Twin Room with balcony	5,500,000	<b>215</b>
Novotel Living Saigon South	15 mins	Studio King bed / Twin room	2,500,000	<b>98</b>

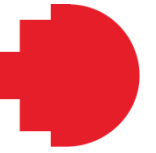


# RMIT Vietnam

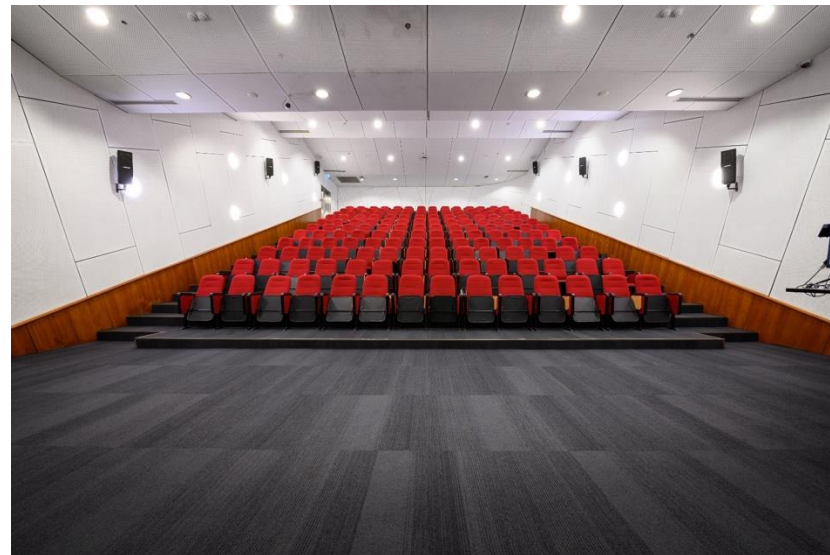
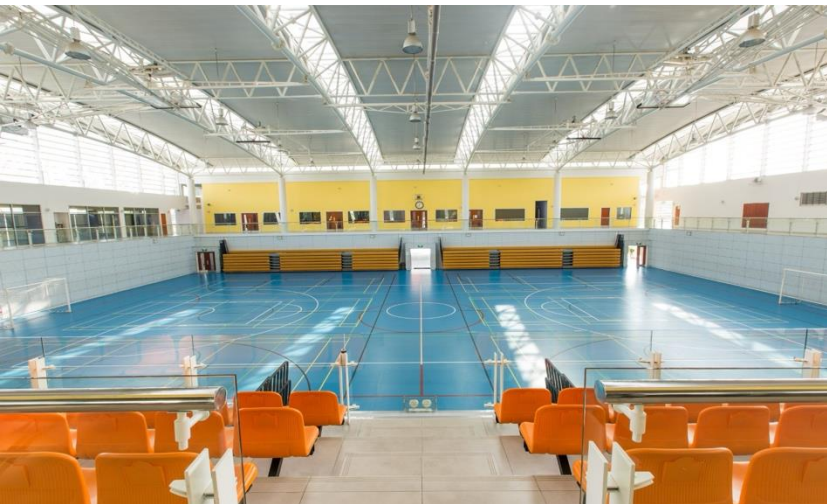


# RMIT Vietnam – Saigon South Campus

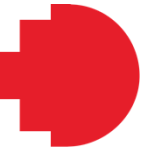




# RMIT Vietnam – Saigon South Campus

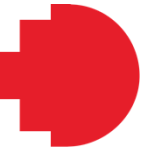






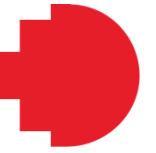
# RMIT Vietnam – Saigon South Campus





# RMIT Vietnam – Saigon South Campus



The logo for the 25th anniversary, featuring the number '25' in a bold, dark blue font. The '5' is stylized with a red circular shape integrated into its right side. To the right of the '25' is the text 'Years Together in Vietnam' in a dark blue, sans-serif font.

**25** Years  
Together  
in Vietnam

**IFFTI Annual Conference '26**  
**Dates & Timeline**

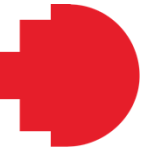


# Proposed Conference Agenda

Monday 13 Apr 26	Tuesday 14 April 26	Wednesday 15 April 26	Thursday 16 April 26	Friday 17 April 26
Exec Committee Mtg	General Council mtg	Main Conference Day 1/2	Main Conference Day 2/2	Activities / Tours
Sub Committee Mtgs	Afternoon: Registration	Student design competition awards	Gala Dinner	
	Opening & Keynote			
	Reception			



# Proposed Timeline 2026



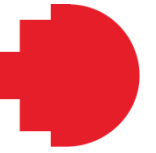
13 weeks	<b>Abstract submissions date – Review process begins</b>	<b>30 June 2025</b>
	Conference registration opens	30 September 2025
	Authors notified of abstract acceptance	01 October 2025
	Invitation to submit text-based papers, posters, workshops or practice-based research	01 October 2025
10 weeks	Practice-based research review and notification of acceptance	01 November 2025
	<b>Text based full papers, posters and workshops submission date</b>	<b>15 November 2025</b>
	Text based papers, posters and workshops review completed and final selection	20 December 2025
	<b>Notification of acceptance</b>	<b>10 January 2026</b>
	Deadline for at least ONE author to register for conference <b>(Tet 2026: ~16-20 Feb)</b>	01 February 2026
	Publication of programme and final agenda	12 April 2026
	<b>Conference</b>	<b>13-17 April 2026</b>



# First Thoughts - Subthemes

## Re-wilding Fashion

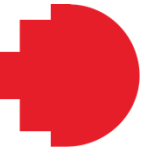
- how can fashion can integrate elements of the natural world to create sustainable and regenerative designs.
- **Regenerative Textiles and Processes**
- **Cultural Roots in Fashion:** Exploring the significance of cultural heritage and indigenous knowledge in rewilding fashion, fostering a creative and thriving industry rooted in diverse traditions.
- **Sustainability Through Nature** beyond traditional environmental approaches in the fashion sector.



# First Thoughts - Subthemes

## Re-learning Fashion

- **Paradigm Shift in Fashion:** Encouraging a critical reassessment of prevailing fashion norms to spark transformative change
- **Community-Driven Perspectives:** Emphasizing the significance of unlearning and relearning fashion through active partnerships with local communities to redefine industry standards and principles.
- **Pedagogies:** Advocating for hands-on learning experiences and collaborative knowledge exchange that cultivate fresh insights and unconventional approaches to fashion education.
- **Inclusive Fashion Narratives:**



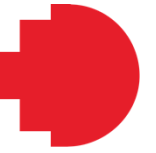
# First Thoughts - Subthemes

## Re-thinking Technology

- How is technology leading the regenerative fashion journey?
- Overcoming barriers impeding the technology drive in narrating regenerative fashion
- TEKnologies

## Re-connecting Communities / Re-locating Fashion

- Learning with local communities and centering their voices to change fashion ideals.
- Telling authentic stories and evaluating how identities and communities are understood through fashion's cultural narratives.
- What role does cultural heritage play in shaping regional fashion narratives and sustainable practices?
- How can local fashion systems balance economic viability with ecological responsibility?



# Keynote

Collaborative / Conversational Keynote

Suggestion:

[Associate Prof Dr. Donna Cleveland](#), Interim Dean of the School of Communication & Design,  
RMIT Vietnam

*in conversation with*

[Professor Alice Payne](#), Dean of the School of Fashion & Textiles, RMIT Australia

&

Vietnam thought leader in sustainability, culture, textile

**Cảm ơn và hẹn gặp lại tại Việt Nam!**



ITEM	Budget 2023	Actual 2023	Budget 2024	Actual 2024	Budget 2025
	(US\$)	(US\$)	(US\$)	(US\$)	(US\$)
<b>INCOME</b>					
Subscription from members	126600	114634	121800	116697	117600
Corporate Sponsorship	-	-	-	-	-
Interest (Fixed Deposit and Saving Bank)	18000	17729	18000	17971	18000
<b>Total Income(A)</b>	<b>144600</b>	<b>132363</b>	<b>139800</b>	<b>134668</b>	<b>135600</b>
<b>EXPENDITURE</b>					
<b>Programmatic Initiatives</b>					
a) Senior Faculty (2)	4000	4000	4000	4000	4000
b) Early Career Researchers (2)	4000	6155	4000	4169	4000
c) Doctoral research students (1)	4000	4000	2000	2135	2000
d) Chair Paper Presentations (2)	-		2000	2811	2000
e) IFFTI Exchange Initiatives (4)	2000	8500	12500	10000	12500
f) Travel Scholarship (Chairperson, Education Chair and Research Chair)	3500	2500	3500	3500	3500
g) IFFTI Publications	20000	8000	20000	10000	20000
h) Support to host Institution	30000	40000	20000	10000	30000
i) IFFTI Distinguish Members (10 Gala Dinner)	-	-	-	-	2000
<b>Total(B)</b>	<b>67500</b>	<b>73155</b>	<b>68000</b>	<b>46615</b>	<b>80000</b>
<b>Administrative Planning and promotion</b>					
Rent paid to Pearl for IFFTI Office	3100	3086	3100	2,978	3100
IFFTI Website	2000	1996	2000	1,852	2000
Social Media		999	2400	2,162	2400
Consultancy to General Manager + Salary to Staff (Medical allowance+Conveyance)	35700	35244	38000	37648	38000
Consultancy to Chartered Accountant	4600	4687	4600	4488	4600
Telephone & Internet Charges	172	153	160	163	160
Bank Charges on Foreign Transaction	-	763	800	1277	800
Foreign Travel expenses	4000	3859	3000	2847	3000
<b>Total Administrative Expenses (C)</b>	<b>49572</b>	<b>50787</b>	<b>54060</b>	<b>53,415</b>	<b>54060</b>
<b>Total Expenditure (B+C)</b>	<b>117072</b>	<b>123942</b>	<b>122060</b>	<b>100030</b>	<b>134060</b>
<b>Net Income (A- (B+C))</b>	<b>27528</b>	<b>8421</b>	<b>17740</b>	<b>34638</b>	<b>1540</b>
<b>Notes: -</b>					
<b>1. Membership Subscription not received for the year 2024 from:-</b>					
a) Ecole Duperre, France					
b) UPC, Peru					
<b>2. Payments made towards Publication and Conference Host Support in the year 2024:-</b>					
a) EWHA Womans University, South Korea (IFFTI Conference Hosting 2024)-\$10000					
b) EWHA Womans University, South Korea (IFFTI Conference Publication 2024) -\$10000					
<b>3) Invoice Awaited for the 2023 IFFTI Publication(\$10000)-Otago Polytechnic, New Zealand</b>					

# **Membership Sub-Committee**

**IFFTI Executive Committee Meeting  
12 February 2025**

*Presented by: Professor Margo Barton  
Otago Polytechnic, New Zealand.*



# Membership Sub-Committee:

- Dr Margo Barton (Chair) Otago Polytechnic, New Zealand, Oceania
- Dr Liz Barnes (Deputy Chair) Manchester Metropolitan University, UK. Europe
- Helen Gaudette Fashion Institute Of Technology, USA . Americas
- Mr Norio Nakanishi Bunka Gakuen University, Japan. Asia
- Laura Washington FDS TAFE NSW, Australia. Oceania
- Ms. Gulin Girismen Istanbul Moda Academy, Turkey. Europe
- Circe Henestrosa Lasalle College Of The Arts, Singapore. Asia



1. Updated membership status:

# 1.a Status of Membership Subscriptions:

**2025 subscriptions: 20 subscriptions received to date.**

- Note: Professor Robyn Healy IFFTI Chairperson communicated with Universidad Peruana de Ciencias Aplicadas (UPC), Peru, on 6th January 2025, that they have a gap year in 2025. We are awaiting their response.

# 1.a Status of Membership Subscriptions:

**Ecole Duperré, Paris** - Ms. Natacha Lallemand shared a positive response, which says that they would like to consider their continued membership with us (IFFTI), IFFTI Secretariate have sent them invoices for the years 2024 and 2025.

**HOGENT University of Applied Sciences and Arts, Belgium** has withdrawn its membership of IFFTI. A response is being sent on behalf of the Membership Subcommittee.

# 1.b Status of Membership Subscriptions:

**KNUST, Ghana** – They reached out requesting an invoice for their status change to Associate Member. IFFTI informed them that they were listed as an Outreach Member in 2023, and as part of this status, they are entitled to three years of support. Therefore, starting next year, their status will transition to Associate Member with IFFTI and an invoice for the same would be shared.

## 2.a Potential new members:

Approaches from institutions:

2 new institutes who have approached for membership from India. Application awaited which will then be shared with the membership committee for review.

- 1. MIT, Pune India
- 2. Woxsen University, Hyderabad India

## 2.b Potential new members:

- Newly established institution:
- 3. Chitkara University Mohali, India

Were reviewed by the Membership Committee early this year, and it was decided to wait for their first graduates to pass which will happen March 2025.

Additionally, UID, India, a regular member of IFFTI, has provided a supporting letter to them.

## 2.c Potential new members:

Laura Washington is connecting with the following institutions.

1. Curtin University, Perth, Australia. Laura has reached out to a previous head of school, but has now found out recently she has left Curtin in Dec '24. Laura is in the process of connecting with the appropriate fashion person, Stephanie Hampson.
2. Queensland University of Technology (QUT ), Brisbane , Australia. Laura emailed Icaro Ibanez Arricivita. Is waiting on a response, but this is a busy time with the start of the academic year in Australia.



## 2.d Potential new members, cont'd:

Circe Henestrosa is connecting with the following institutions.

1. Universidad de Monterrey wants to attend the conference to understand how IFFTI works and join us.
2. Circe is meeting Centro in Mexico to ask if they may consider joining.

Margo Barton is connecting with the following institutions.

1. Auckland University of Technology, Auckland New Zealand. Margo has reached out to Professor Mandy Smith. Mandy has shown an interest and has been connected to Surbhi to receive more information.
2. Massey University, Wellington, New Zealand. Margo has reached out to the head of the fashion area, Sue Prescott, and is waiting on a response. But this is a busy time with the start of the academic year in New Zealand.

## 2.e Potential new members, cont'd:

Mr Norio Nakanishi, Bunka Gakuen University, Japan. Asia.

1. Koran College of Fashion Design, Japan. Norio is discussing membership with Koran College of Fashion Design, a research institute in Japan.

Helen Gaudette suggests connecting with the following institutions.

1. The Cape Peninsula of Technology in South Africa. FIT has recently started an exchange agreement with The Cape Peninsula of Technology in South Africa, which has a strong textiles area. Helen could reach out to them about becoming members, and asks if any of the members know any people there.

Any questions and comments?

**Thank you.**

**AMFI**

AMSTERDAM FASHION INSTITUTE

IFFTI Education subcommittee

**UPDATE**

**IFFTI**

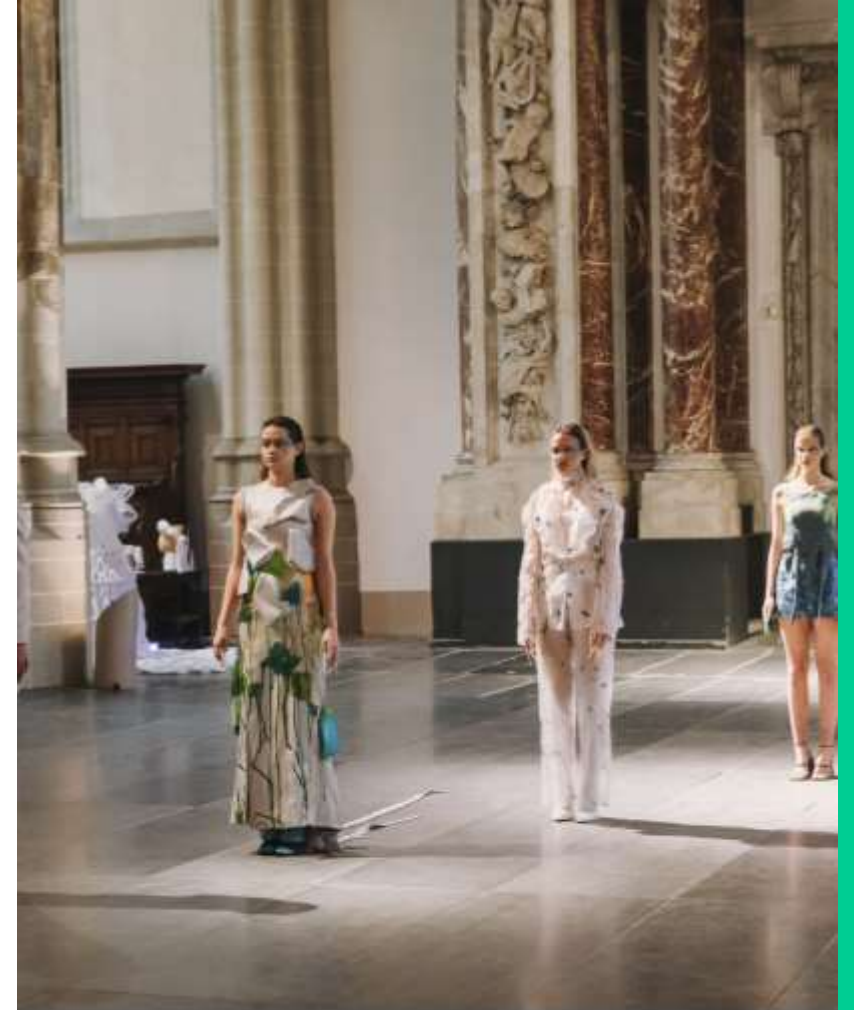
1. Education Subcommittee
2. IAF update

12 feb 2025

# IFFTI

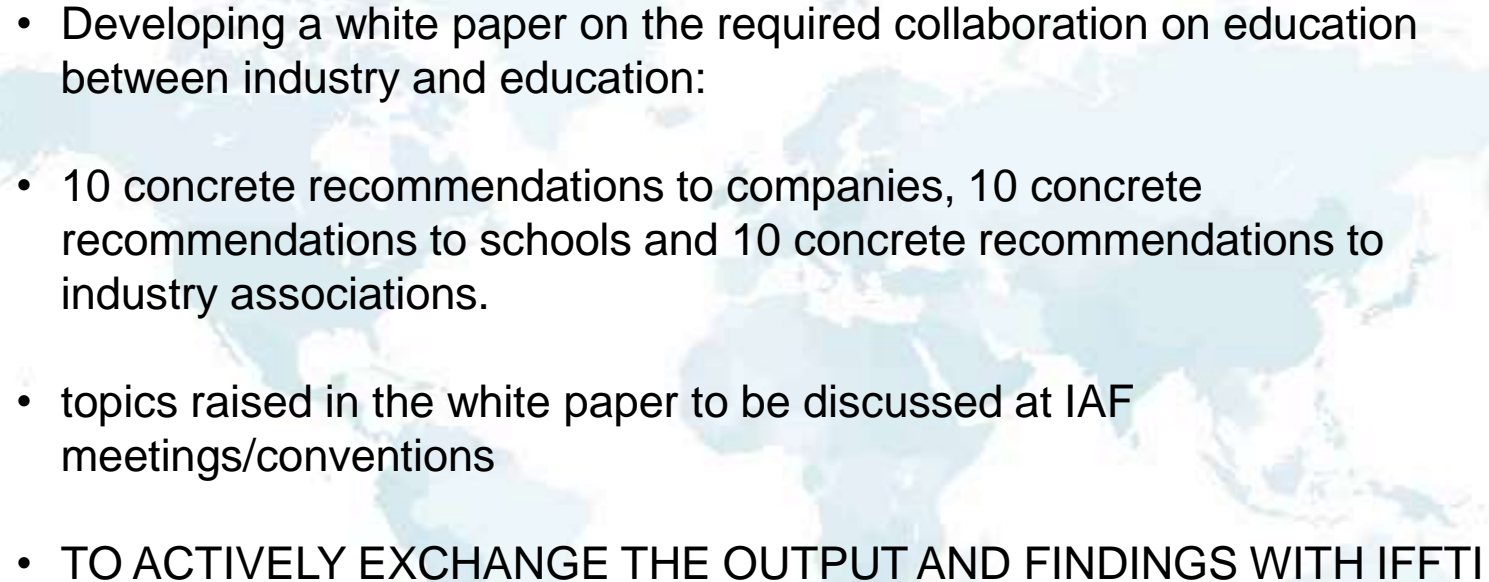

## EDUCATION SUB COMMITTEE

1. 26 February (online meeting) to discuss the contribution at IFFTI conference. Since there are a lot of workshops, the education sub-committee decided with LCF to monitor and support the workshops and to take learnings from it for future activities of the committee
2. At the IFFTI conference IAF/Matthijs Crietee will join the meeting to discuss a better alignment and collaboration between the two education subcommittees
3. First results of the IAF survey will be discussed
4. We will further develop regional activities during the year in line with the research sub committee



Source: AMFI Graduation

# IAF education committee – RECAP

- 
- 
- Developing a white paper on the required collaboration on education between industry and education:
  - 10 concrete recommendations to companies, 10 concrete recommendations to schools and 10 concrete recommendations to industry associations.
  - topics raised in the white paper to be discussed at IAF meetings/conventions
  - **TO ACTIVELY EXCHANGE THE OUTPUT AND FINDINGS WITH IFFTI**

# INTERNATIONAL APPAREL FEDERATION

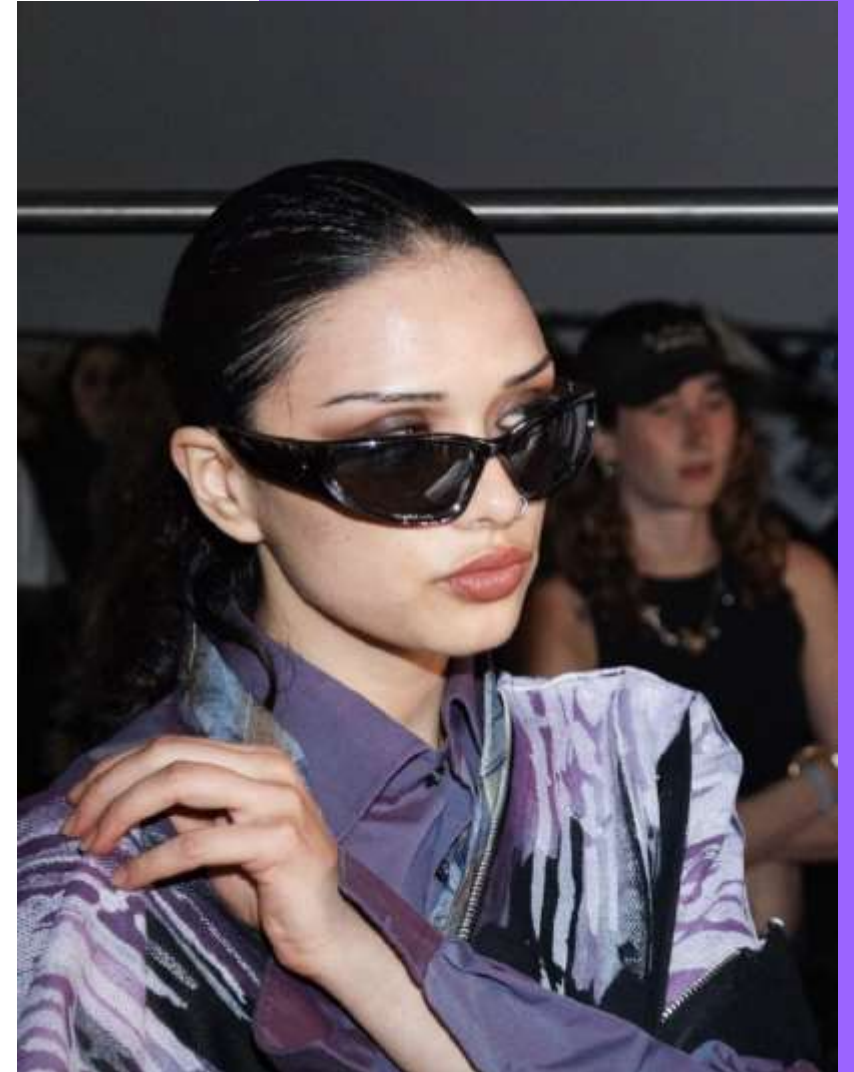
## NEW STRUCTURE AND FOCUS

COLLABORATION WITH ITMF/IAF IN CONVENTIONS:

24-28 October Yogyakarta, Indonesia 2025

### FOUR COMMITTEES

1. Sustainability (decarbonization)
2. Education (bridging education and industry). IAF is aligned with skills pact, led by Euratex, who is currently investigating Europe's situation and the need for green and digital skills Aequalis: <https://aequalis4tclf.eu> en Meta skills (<https://www.metaskills4tclf.eu/>)
3. Purchase practice STTI.
4. Business innovations (overproduction)



Peter Stigter: AMFI July2024



# IAF EDUCATION

## EDUCATION SUBCOMMITTEE

- Survey send out in February 2025 following the Metaskills and Aequalis questionnaires
- Results to be discussed at IFFTI LCF conference in March 2025 with the IFFTI education subcommittee
- Secretary Matthijs Crieteer will attend the IFFTI conference to discuss further collaborations with the board?



AMFI Graduation: Photo: Tim Buiting

**Thank you!**



# Update on Research Sub-Committee

Prof. David Zajtmann, Chair  
Prof. Anne Porterfield, Member



## **Update on Research Sub-Committee**

Result of IFFTI Exchange Initiative 2024 - Timeline 2

Update on Regional Meetings

- a) AMFI, The Netherlands
- b) Pearl Academy-India Chapter



## **Result of IFFTI Exchange Initiative 2024 - Timeline 2**

1. Prof. Kumaraguru Kasinathan - Home Institution: NIFT, India - Host Institution: Fashion Institute of Technology, USA
2. Robin Kerr - Home Institution: MMU, UK - Host Institution: Bunka Gakuen University, Japan

# Update on Regional Meetings



## a) AMFI, The Netherlands

### Europe Workshop - November 15th, 2024

AMFI tour (Roger Gerard, Head of Fashion Design)

Presentation of various institutional research structures & showcase of latest research advancements:

- Jurrie Barkel & Theresia Grevinga ( Saxion – University of Applied Sciences): ‘TEACH4SD’
- Prof. Carolyn Hardaker (De Montfort University) : ‘School of Fashion and Textiles Research Themes’
- Prof. Anthony Kent (Nottingham Trent University) : ‘a research from Dr. Theo Hughes-Riley Brief overview of Electronic Textiles Research Conducted by the Advanced Textiles Research Group at Nottingham Trent University’
- Dr. Deniz Koksal & Prof. Jose Teunissen (AMFI): ‘NewTexEco’
- John Lau (London College of Fashion, UAL): ‘Intersections in Fashion Research’
- Dr. Silvia Perez Bou (ISEM, Universidad de Navarra): ‘Levels of Customer Experience at ECOALF stores – Visceral, Behavioral, and Reflective Design for engaging in a Sustainability Community’.
- Prof. David Zajtmann (Institut Français de la Mode) : ‘Paris as a Fashion Capital’
- Dr. Ben Wild (Manchester Metropolitan University): ‘Fashioning new research narratives’

Exploration of IFFTI's mentoring program

## Update on Regional Meetings



b) Pearl Academy-India Chapter – 4<sup>th</sup> of December 2024

### **Agenda for the Inaugural IFFTI India Chapter Roundtable**

**Venue:** Pearl Academy, New Delhi, West Campus.

Paper Presentation in the area of **Sustainability, Digital Innovation, Skill Development**

**Keynote Speaker:** Aligning design education with India's vision on sustainability, digital transformation, and skills

**Roundtable Discussions:** Table discussion around sustainability, digital

transformation, and skill enhancement, using clue cards for guided dialogue.

**Manifesto Creation:** Collaborative session to draft the mission and vision for the IFFTI India Chapter.



Thank you for your attention!