



MINUTES OF 65TH IFFTI EXECUTIVE COMMITTEE MEETING

Meeting	65th IFFTI Executive Committee Meeting (Online)
Date	13th November 2024
Time	10 AM GMT

Chairperson-IFFTI

- Prof. Robyn Healy, Royal Melbourne Institute of Technology, Australia

Regional Members

- Prof. Anne Porterfield, North Carolina State University, USA – Member
- Prof. Jose Teunissen Amsterdam Fashion Institute (Hogeschool), The Netherlands – Chair, Education Initiative Sub-Committee
- Dr. Deirdre Sato, Fashion Institute of Technology, USA- Member
- Helen Gaudette, Fashion Institute of Technology, USA- Member
- Prof. Norio Nakanishi, Bunka Gakuen University, Japan – Member
- Prof. John Lau, London College of Fashion, UK – Member, Hosting 2025 IFFTI Annual Conference
- Prof. Jun Li, Donghua University, P.R. China – Deputy Chair, Finance Sub-Committee
- Prof. Carolyn Hardaker, De Montfort University, UK- Member
- Prof. Margo Barton, Otago Polytechnic, New Zealand- Chair, Membership Sub-Committee
- Ms. Aditi Srivastava Pearl Academy, India – Chair, Finance Sub-Committee.
- Circe Henestrosa, LASALLE College of the Arts, Singapore- Member

Co-opted Member

- Prof. David Zajtmann, Institut Francais De La Mode, France- Chair, Research Sub-Committee
- Prof. Julia Gaimster, Royal Melbourne Institute of Technology, Vietnam- Hosting 2026 IFFTI Annual Conference

General Manager-IFFTI

- Surbhi Nijhawan- General Manager, IFFTI

Additional Guest-

- Prof. Anthony Kent, Nottingham Trent University, UK

Apologies

- Prof. Liz Barnes, Manchester Metropolitan University, UK – Deputy Chairperson-IFFTI, Deputy Chair, Membership Sub-Committee
- Prof. Gargi Bhaduri, Kent State University, USA – Member
- Prof. Borim Joo, Ewha Womans University, South Korea- Hosted 2024 IFFTI Annual Conference
- Laura Washington, FDS TAFE Australia- Member

2. Welcome

2.1 The Chairperson, Prof. Robyn Healy, commenced the meeting by warmly welcoming all members and expressing appreciation for their dedication despite time zone disparities. She emphasized the importance of engaging in meaningful discussions on matters pertinent to the foundation

3. Chairs Remark

3.1 Welcome to the IFFTI Executive Committee

3.1.1 Prof. Robyn Healy welcomed Helen Gaudette from FIT, USA, who assumes the role previously held by Dr. Deirdre Sato.

3.1.2 Chairperson welcomed Prof. Julia Gaimster, RMIT, Vietnam, as a co-opted member as host of the Annual IFFTI Conference in 2026.

3.2 Farewell to Dr. Deidre Sato, FIT USA

Chairperson extended on behalf of all EC members its heartfelt thanks to Deidre Sato from FIT, USA, for her exceptional contributions as a long-time member. Deidre's support, particularly during the COVID-19 pandemic, was invaluable in navigating critical challenges. Her efforts have greatly impacted IFFTI's membership and overall functioning.

We appreciate her dedication and hope she will join us as a guest at the IFFTI Conference at London College of Fashion.

3.3 Distinguished IFFTI Member

3.3.1 As discussed earlier, the Chairperson stated that we will extend invitations to previous Chairs and Deputy Chairs of IFFTI, to honour and acknowledge their valuable contributions by offering them the distinction of becoming Distinguished Members of IFFTI. As Distinguished Members, they will be supported to attend the IFFTI conferences and the conference dinner. Invitations will be sent out to approximately six individuals in this category, and their participation will help determine how many people IFFTI will support at the upcoming conference.

After this, a second tier will be considered, which includes members of the Executive Committee and others who have made significant contributions to sub-committees.



Even if these individuals do not wish to attend the conferences, they will be acknowledged on the IFFTI website for their contributions as Distinguished Members. The committee is working to ensure fairness and transparency in this process.

Decision- The Chairperson and General Manager will work on this Initiative.

3.4 Enhancing Inclusivity: Financial Assistance for Underfunded Universities to Attend IFFTI Conferences Near the Host Institute

The Chairperson passed this point to John, asking how he would like to extend this initiative in his region and the need to differentiate between IFFTI members and non-members, particularly regarding benefits and access to events. John proposed inviting 5 faculty from underfunded universities and colleges to attend the conference, even if only for a day or half a day, and offering financial assistance or in-kind support such as free entry. He emphasised the value of providing Continuing Professional Development (CPD) opportunities to these institutions, this would help them gain access to important research discussions.

Prof. Robyn emphasised the importance of ensuring logistical feasibility and clear communication to avoid confusion. John agreed to prepare a briefing paper outlining the proposal, which will be shared with the Executive Committee for approval and to ensure alignment with all members' expectations.

3.5 Award to Visiting Faculty - Set up Rules

The General Manager shared challenges faced in transferring funding to Senior Faculty as part of the IFFTI Initiative. An example was provided of Iannis Bardakos, who was a visiting faculty member at Marangoni in China. There were significant delays in transferring the reward money due to discrepancies between his bank account address and his residence address, taking approximately 3-4 months to resolve.

The Chairperson brought this matter to the attention of the Research Committee, and Prof. David proposed that, in such cases, the award money could be directed to the institute where the visiting faculty member is based. The Chairperson requested that the Research Committee decide on the best course of action for handling this situation.

3.6 IFFTI Website - Review Objectives of IFFTI- will be discussed offline at the LCF Conference in 2025.

3.7 Discussion on Accommodation IFFTI LCF Conference 2025

Decision- The West Bridge Hotel in Stratford was identified as the preferred place for EC to stay.

3.8 Engagement of all EC members

Prof. Robyn Healy suggested a quick roundtable to hear updates and news from all Executive Committee members regarding developments in their respective institutions. She highlighted that, while the meetings often focus on the agenda, it is important to give space for members to share relevant news or issues impacting their institutions. Prof. Robyn shared that in Australia, there has been a significant change due to the government's introduction of caps on international student numbers, while RMIT has remained stable. This issue is being observed globally, prompting institutions to reassess their strategies.

3.8.1 Circe Henestrosa shared that a new Southeast Asian Fashion Research Lab has been launched at the University of the School of Fashion, focusing on the equatorial zone, with Singapore as a central location. The lab will explore how fashion is defined in regions where seasons are absent, particularly in the equatorial belt that spans Africa, South America, and Southeast Asia. The research will look at the cross-cultural exchange in fashion and how regional designers are responding to these influences.

The university plans to produce a journal dedicated to this topic and is organizing a conference in November 2025 to foster dialogue among experts from the region. Additionally, an exhibition on the "Global Tropics" will highlight designers working within this specific region. This initiative aims to create a new perspective on fashion within the context of the global tropics.

3.8.2 Ms. Aditi Srivastava informed the committee that the IFFTI India chapter will be held at the Pearl Academy in India. They have eight member institutions throughout the country. They are bringing them together in Delhi on December 4th. The topics are sustainability, design, innovation, and skill development. They are also working on a roundtable discussion about what the IFFTI 2027 conference should be like. To ensure more inclusivity, they encourage all Indian IFFTI members to be included in the conference planning.

3.8.3 Dr. Helen Gaudette shared exciting news about FIT's upcoming developments. The institution is set to open its first new academic building, which will house classrooms, laboratories, lounges, conference rooms, and a dedicated knitting lab. This new facility will be connected to the existing building on different levels, with its grand opening scheduled soon. Additionally, Helen informed the committee that FIT's president, Dr. Joyce Brown, will be stepping down at the end of the year after 25 years of service. A gala celebration is planned in her honour.

3.8.4 Prof Jose Teunissen provided an update from AMFI, sharing that the institution is preparing for a major conference next week focused on the digitalization of fashion. This event will bring together key industry leaders and software providers, fostering valuable discussions on the current state of the industry and its challenges. Additionally, Prof Jose mentioned that AMFI is working towards improving the overall institution, including updating its curriculum and preparing to launch a new master's program next year. The institution is also exploring new facilities and developments in departments, particularly in artificial intelligence, which will contribute to further advancements in their academic offerings.

3.8.5 Anne Porterfield shared that the Wilson College of Textiles is celebrating its 125th anniversary this year with a series of exciting events. The college is preparing to launch its new prototyping lab, the "Flex Factory," which integrates knitting, spinning, and weaving at a smaller scale for prototyping purposes. The redesign of the first-floor spaces is underway to accommodate this new facility. Anne also shared that she has taken on the role of Interim Director of Undergraduate Programs, and the college is currently experiencing a surge in enrollment, which has been a significant focus of her work.

3.8.6 Carolyn Hardaker shared that at De Montfort University, the curriculum is being streamlined to attract a more home-based market due to a noticeable shortfall in international students, influenced by external factors. The university is also excited about its growing partnership with John Polytechnic University in China, where a dual award program is entering its second year. This program allows students at John Polytechnic University to receive an award in Apparel Design from XPU and Fashion Design from De Montfort, covering diverse product categories such as lingerie, sportswear, swimwear, footwear, and textiles. De Montfort University is preparing to host the FTCS (Fashion and Textile Courses) Conference in September 2025, organised by the UK Subject Association for Fashion and Textile Courses.

4. Status of Preparation 2025 IFFTI Annual Conference at LCF, UK

4.1 Prof. John Lau shared a presentation on the preparation for the IFFTI 2025 Conference. The detailed presentation is placed in **Annexure 1**.

4.2. The chairperson acknowledged the efforts involved in organizing the conference and recognized the challenges institutions face while planning such events. The Chairperson emphasized that the executive committee is encouraged to ask questions, and assured that any concerns will be followed up accordingly.

Additionally, the Chairperson mentioned that regular monthly meetings have been scheduled to ensure continuous progress and coordination for the 2025 conference.

5. Update on Finance Sub-Committee

5.1 Ms. Aditi Srivastava shared the Update on the IFFTI Finance Sub-Committee.

1. Payment made to IFFTI Initiative Awardee (2024) -

Senior Faculty - M. Ioannis Bardakos-Istituto Marangoni, Shanghai

2. IFFTI Exchange Initiative 2024 Timeline 1 -

Karime Salame Sainz, Amsterdam Fashion Institute (Hogeschool), The Netherlands

3. Payment made to Ewha Womans University, South Korea-

Conference Publication Fee (2024 IFFTI Annual Conference) -\$10000

4.2024 subscriptions:

50 Subscriptions received

2 Outstanding

❖ Ecole Duperre, Paris

❖ Universidad Peruana de Ciencias Aplicadas, Peru

6. Update on Research Sub-Committee

Prof. David provided an update on IFM, detailing the successful merger with Ecord, and expanding the institution's presence. IFM now occupies a new 12,000-square-meter campus with 1,200 students. While the focus is on consolidation, the institution is graduating its first cohort in a Bachelor of Science in Management and Creative Industries. IFM has signed exchange agreements with international institutions like MIT and has a dynamic research partnership with Sorbonne universities, with ongoing PhD projects in fashion, architecture, and urban studies. IFM is about now consolidation and brewing, but it's an organic growth.

6.1 Prof David shared an update regarding the Research Sub-Committee's past and future activities plan towards the conference.

• **Review Developmental Session hosted by the Research Committee.**

Prof David thanked Prof Tony and Prof Noel for their support for the session. It went very well with over 150 authors participating in it.



6.2 Update of the November 15th Regional Workshop at AMFI

Prof. David provided an update on the Research Subcommittee, highlighting the upcoming regional research workshop scheduled for Friday, which will host 15 participants from institutions in the UK, Netherlands, Spain, and IFM. The workshop will focus on research presentations in the morning and selected research projects in the afternoon, fostering cross-collaboration. The event aims to encourage continued interaction between education and research initiatives.

6.3 Under IFFTI Exchange Initiative –

Prof. Claudia Ebert-Hesse (AMD) visited KNUST Ghana (Outreach Member of IFFTI)

Outcome: A Joint workshop between the two institutions. AMD Akademie Mode & Design, Germany and KNUST, Kwame Nkrumah University of Science and Technology in Kumasi, Ghana.

7. Education Initiative Sub-Committee

7.1 Prof. Jose announced that John Lau is the new Deputy Chair of the Education Initiative Sub-Committee. Prof. Carolyn from DMU in the United Kingdom and Prof. Gargi from Kent State University in the United States have joined as new members of the Committee.

7.2 Developmental Session

Prof. Jose updated the recent development session for posters, workshops, and practice-based research. The session, attended by around 50 participants, focused on defining workshops, presentation spaces, and the feasibility of presenting practice-based work at the LCF conference. The session received positive feedback, especially regarding the clarity of guidelines and individual support provided.

7.3 **Future Activities** - The subcommittee will hold another meeting later this month to discuss the potential for an online session and further preparations for the LCF Conference in March.

7.4 **Update on the IAF**- The last IAF conference was held in Uzbekistan, which proved to be quite challenging. They have also undergone a restructuring process. However, they are still working on restructuring and navigating the post-COVID landscape to determine the best course of action. Prof. Jose mentioned that the next meeting with IAF will be held to provide feedback and updates next week. She plans to discuss the issues and explore potential collaboration with IFFTI.

The Chairperson expressed a willingness to review this matter further at the upcoming LCF Conference.

8. Membership Sub-Committee

8.1 Prof Margo Barton shared an update regarding her institution's recent transition. After becoming part of a megapolytechnic in 2022, New Zealand's polytechnics have now been unmerged, with efforts underway to reestablish the institution as a standalone entity.

The detailed Presentation on Membership Sub-Committee is placed in **Annexure 2**.

Discussion on UPC Peru -As their membership subscription is outstanding for 2024. Prof Robyn suggested to give them a gap year as to have reach in the region as we would like a presence in that area too. Margo Barton suggested sending a letter to UPC, Peru explaining that IFFTI would grant them another gap year. This approach might address their concerns about ongoing communication. Prof Robyn Healy agreed, stating she would be happy to send the letter on behalf of the IFFTI Chairperson. The letter would encourage the institution to reach out with any updates on their status. The committee decided not to pursue further communication regarding the pending Subscription.

IFFTI Memberships Types concern:

a) Corporate Sponsors

b) Reciprocal membership

Decision - To be discussed offline at the LCF Conference in 2025.

9. Additional Points:

9.1 **Professor Tony Kent** shared that he is set to retire at the end of this year. He plans to assist with reviewing and other tasks into early January and hopes to attend a conference in London later in 2025. However, he will officially conclude his career at Nottingham on December 31st. He also mentioned that the IFFTI is in excellent shape and he is looking forward to participating in the conference in April.

10. The Chair thanked everyone for their contribution and declared the meeting closed

ual ■ london college
of fashion

IFFTI Conference

27th Annual Conference Update



Update

1. Abstract Status
2. Review Process
3. Schedule
4. Activities
5. Keynote Speakers
6. Guidance for Executive Committee

Abstract Status

Abstract Update

- **369 abstracts received**
 - 277 accepted abstracts
 - 79 rejected abstracts
 - 11 unaccepted abstracts

- 225 in-person presentations
- 10 online presentations
- 22 poster presentations
- 20 Workshops

Review Process

Review Process

- **13 December 2024** deadline for submissions
- **17 December 2024** allocate reviewers
- **24 January 2025** reviewers complete full submission reviews

- Workshops and Creative Papers allocate to LCF reviewers
- Text-based papers allocated across network of reviewers
- Grade submission from 1 (reject) to 5 (excellent)
- Comments from reviewer
- Declaration of conflict of interest

Conference Programme

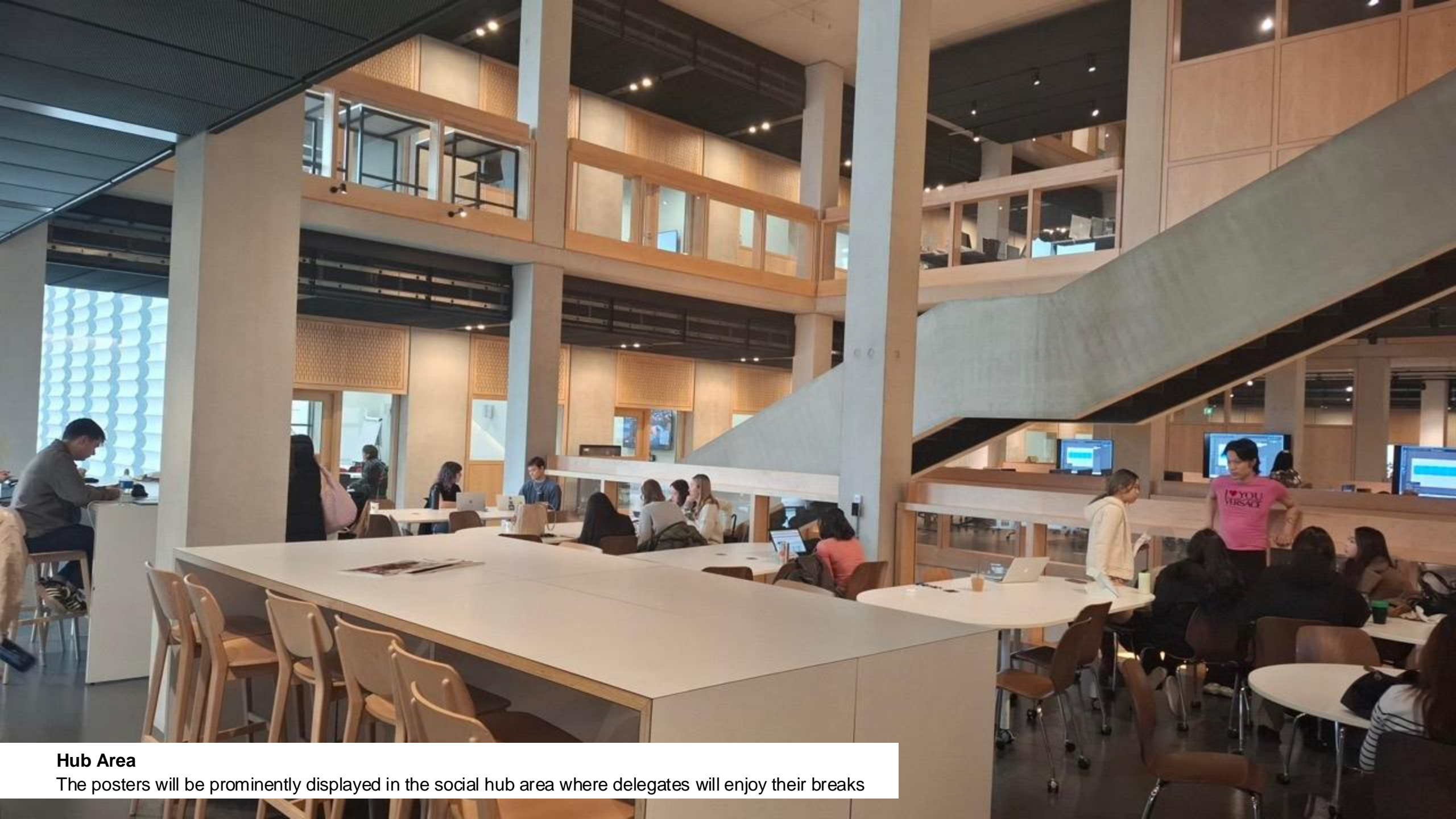
IFFTI 2025

Monday	Tuesday	Wednesday	Thursday	Friday
Registration for Executive Committee	Registration	Registration	Registration	LCF Activities (optional)
Sub-Committee Meetings	Opening Ceremony with Vice Chancellor and welcome from Head of London College of Fashion IFFTI General Council Meeting	Presentations and Workshops	Presentations and Workshops	Archives Research Centres Schools Cultural activities
<i>Lunch</i>	<i>Lunch</i>	<i>Lunch</i>	<i>Lunch</i>	<i>Lunch for participants</i>
Executive Committee Meeting	Keynote Panel	Presentations and Workshops	Presentations and Workshops	
Executive Committee Campus Tour	Workshops		Closing Executive Committee Meeting	
Executive Committee Welcome Dinner	Welcome Reception for all participants Poster presentations Gallery Exhibitions	LCF International Partnerships Reception	Gala Dinner & Award Ceremony	



Hub Area

The posters will be prominently displayed in the social hub area where delegates will enjoy their breaks



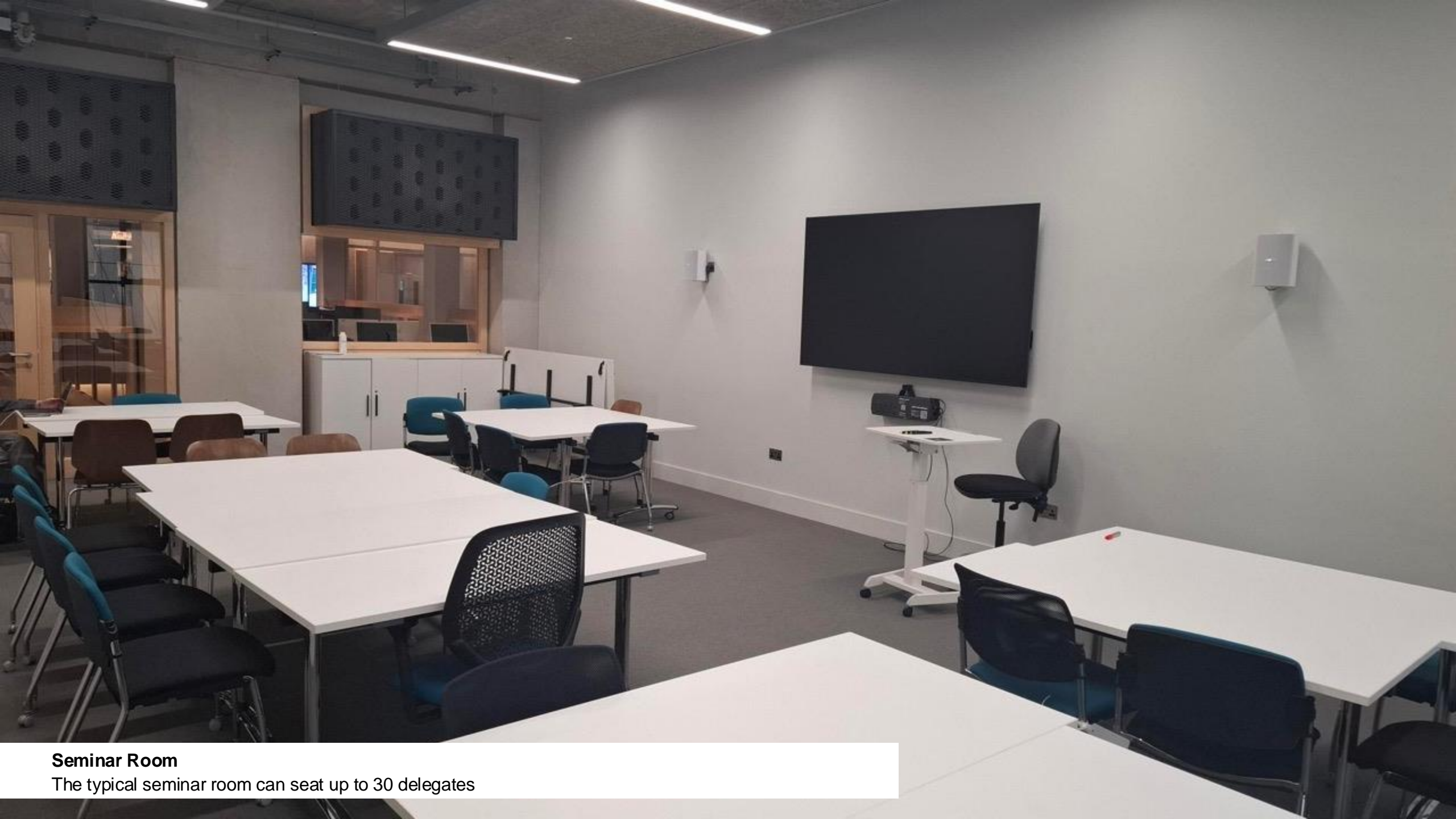
Hub Area

The posters will be prominently displayed in the social hub area where delegates will enjoy their breaks



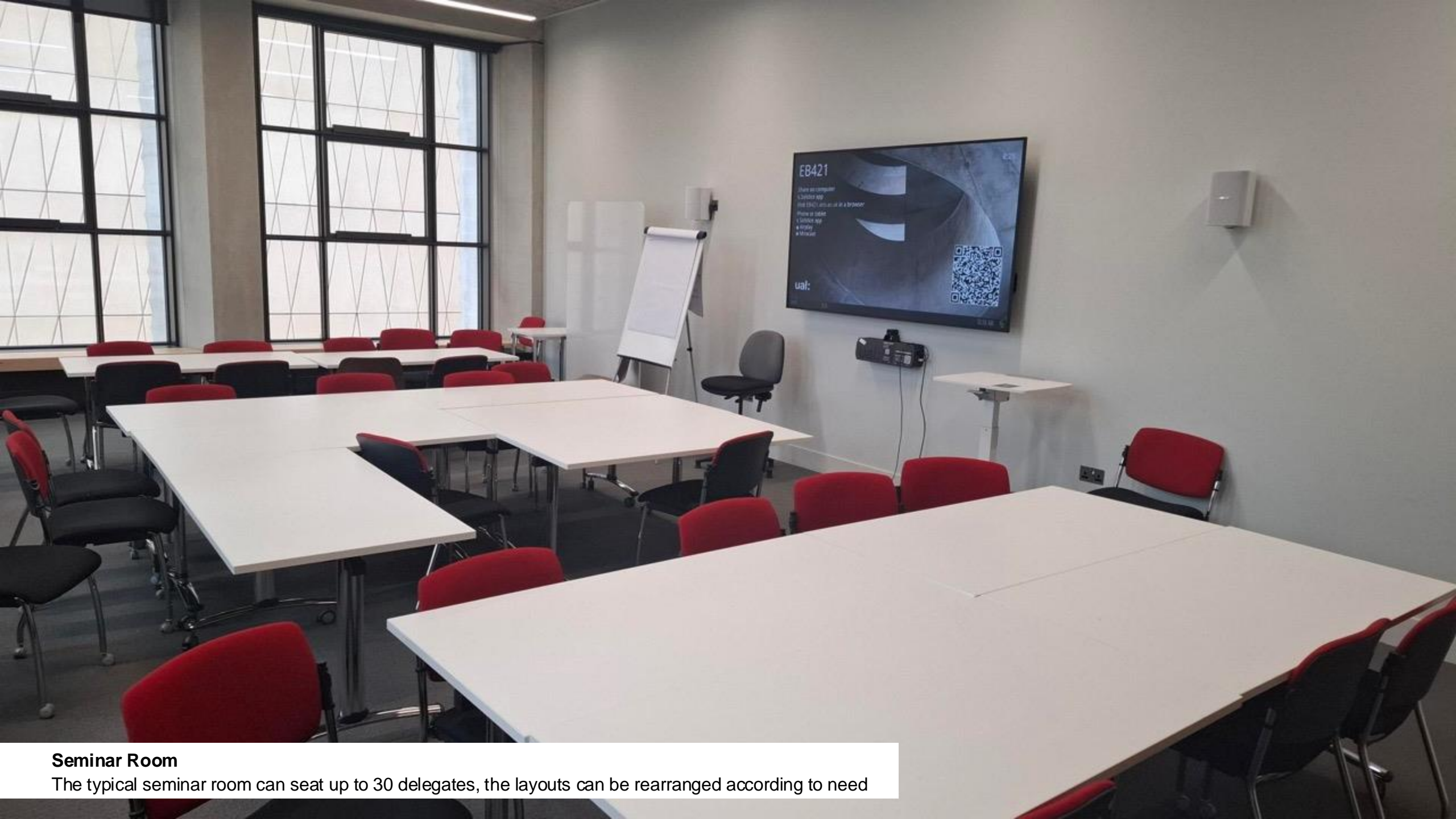
Seminar Room

The typical seminar room can seat up to 30 delegates



Seminar Room

The typical seminar room can seat up to 30 delegates



Seminar Room

The typical seminar room can seat up to 30 delegates, the layouts can be rearranged according to need



Large Seminar Room

The typical seminar room can seat up to 40 delegates



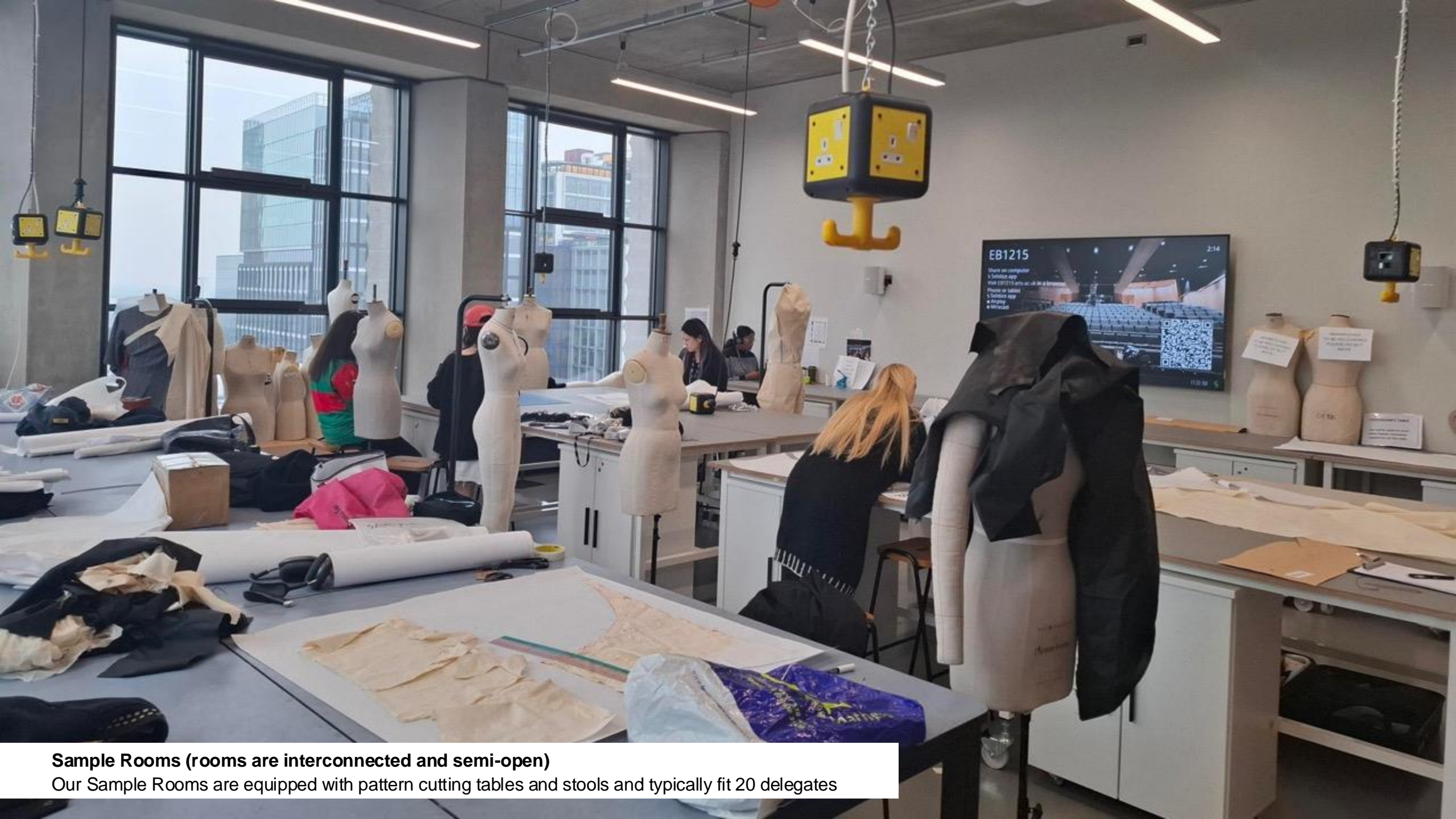
Lecture Style Seminar Room

The typical seminar room can seat up to 60 delegates



Seminar Room

The typical seminar room can seat up to 30 delegates



Sample Rooms (rooms are interconnected and semi-open)

Our Sample Rooms are equipped with pattern cutting tables and stools and typically fit 20 delegates



Sample Rooms (rooms are interconnected and semi-open)

Our Sample Rooms are equipped with pattern cutting tables and stools and typically fit 20 delegates



Sample Rooms (rooms are interconnected and semi-open)

Our Sample Rooms are equipped with pattern cutting tables and stools and typically fit 20 delegates



Sample Rooms (example of a closed room)

Our Sample Rooms are equipped with pattern cutting tables and stools and typically fit 20 delegates

Activities

Activities

- Centre for Sustainable Fashion
- Centre for Fashion Curation
- Fashion Innovation Agency
- London College of Fashion Archive
- School of Design and Technology
- School of Media and Communication
- Fashion Business School
- V&A East Storehouse
- UCL East

Keynote Speakers

Keynote Speakers



Beatrix Ong MBE

Creative Consultant
and Pioneer



Gus Casley-Hayford

Director of V&A East



Christopher Raeburn

Responsible Fashion
Designer



Matthew Drinkwater

Head of Fashion
Innovation Agency



Dr Tet Yap

Executive and Editorial
Director of The Glass
Magazine

Guidance

Guidance for Executive Committee

Your stay

- The Westbridge Hotel – Stratford High Street
- 15 minute walk from hotel to LCF
- Queen Elizabeth Olympic Park – gardens and sports facilities
- Westfield shopping centre
- 15 minutes into central London (Stratford to Bond St)

Attending the Conference

- Advise us on arrival dates and times
- Names of your guests and Emeritus Committee members

Thank you

arts.ac.uk

ual: london college
of fashion

Membership Sub-Committee

IFFTI Executive Committee Meeting
13 November 2024

*Presented by: Professor Margo Barton
Otago Polytechnic, New Zealand.*

Membership Sub-Committee:

- Dr Margo Barton (Chair) Otago Polytechnic, New Zealand, Oceania
- Dr Liz Barnes (Deputy Chair) (apologies) Manchester Metropolitan University, UK. Europe
- Circe Henestrosa Lasalle College Of The Arts, Singapore. Asia
- Ms. Gulin Girismen Istanbul Moda Academy, Turkey. Europe
- Helen Gaudette Fashion Institute Of Technology, USA . Americas
- Laura Washington (apologies) FDS TAFE NSW, Australia. Oceania
- Mr Norio Nakanishi Bunka Gakuen University, Japan. Asia



Membership Sub-Committee note:

We sadly acknowledge that early November 2024 Dr Deirdre Sato will retire from her position at Fashion Institute of Technology, USA.

Deirdre has contributed much to the IFFTI membership subcommittee over the years, always a delight to meet in person and online, and will be greatly missed. Thank you Deidre!

We welcome Helen Gaudette from Fashion Institute of Technology as a new representative on the Membership Sub Committee.

1. Updated membership status:

1.a Status of Membership Subscriptions:

2024 subscriptions (update November 2024):

50 Subscriptions received

2 Outstanding

- Ecole Duperre, París
- Universidad Peruana de Ciencias Aplicadas, Peru

• 2 have withdrawn

: Fashion Institute of Design And Merchandising (FIDM), USA – see note on the next slide

: Falmouth University, UK

• 2 have a gap year

: Fashion Institute of Design and Merchandising, USA: Gap year 2023 (acquired by Arizona State University)

: Universidad Peruana de Ciencias Aplicadas (UPC), Peru: Gap year 2023

1.b Status of Membership Subscriptions - FIDM:

- FIDM were granted a gap year in 2023. They have undergone significant changes in their structure and operations and are now a part of a larger Arizona State University, a university which also offers fashion at Phoenix, AZ.
- Surbhi and the membership committee will make a time for an online meeting with the team at FIDM to understand how we can help them remain a part of IFFTI.
- FIDM are longstanding members (19 years) and hosted an IFFTI Conference in 2013.

2.a Potential new members:

Approaches from institutions:

2 new institutes who have approached for membership from India. Application awaited which will then be shared with the membership committee for review.

- 1. MIT, Pune India
- 2. Woxsen University, Hyderabad India

2.b Potential new members:

- Newly established institution:
- 3. Chitkara University Mohali, India

Were reviewed by the Membership Committee early this year, and it was decided to wait for their first graduates to pass which will happen next year (2025 March).

This institution is keeping in contact with Surbhi.

2.c Potential new members:

- Distinguished members: as discussed by Professor Robyn Healy, Royal Melbourne Institute of Technology, Australia, and recorded in the minutes of the minutes of the 63rd IFFTI Executive Committee Meeting, 22nd April 2024. A project being worked on by Prof. Robyn Healy and Professor Liz Barnes.

2.d Potential new members:

Researchers from non IFFTI members institutions who presented at IFFTI EWHA 2024 in South Korea will be asked to consider membership. These people came from the following institutions:

Humber College, Canada

Keio University, Japan

Southwest University, China

University of Arkansas, USA

University of Bristol, UK

University of Manchester, UK

University of Moratuwa, Sri Lanka

Yonsei University, South Korea

2.e Corporate Sponsor and Reciprocal Membership – for discussion

⋮

- Corporate sponsors versus members. For example, a sponsor associated with a conference host, versus a member as an ongoing supporter, perhaps a global company like Gerber or Clo3D.
- Reciprocal membership: for other organizations in textiles and fashion who offer IFFT membership.

CORPORATE SPONSOR

1. Criteria.

1.1 In order to apply for membership a corporation should be recommended by IFFTI member of either category.

1.2 The Company should be of good repute and standing including financial standing and business ethics. The latest Annual Report is to be provided in support thereof.

1.3 Fees: \$5,000 per Annum. The Company should commit to remain a member for a minimum of three years.

2. Benefits include:-

2.1 Free conference attendance for two delegates.

2.2 Opportunity to participate in the deliberations of appropriate IFFTI Sub-Committee(s).

2.3 Receive copies of all IFFTI publications.

2.4 Access to global network of educational institutes.

2.5 Global recognition.

2.6 Listed on IFFTI website.

3. Corporate Sponsors are to be referred to Membership Committee for approval.

4. Corporate Sponsors will not have voting rights

5. Corporate Sponsors are regulated to 25% of membership numbers

6. To become a Corporate Sponsor of IFFTI, the organization needs to submit a formal proposal to IFFTI Secretariat giving the outline, aims and objectives, and the financial status. The proposal will be considered by the Executive committee.

RECIPROCAL MEMBER

IFFTI Stiches Reciprocal membership with Corporate and Educational Organizations of repute.

Benefits

1. Two delegates from IFFTI and Reciprocal members are invited to attend each others conference free of charge.
2. One delegates can attend each others Executive Committee meetings
3. Work Towards mutually beneficial initiatives.
4. The organization wishing to become a reciprocal member should send a formal proposal giving the outline, aim, and objectives, and benefits which may accrue through this relationship. The proposal will be considered by the Executive committee.

2.f Potential new members: an ongoing project

- Surbhi Nijhawan, General Manager, IFFTI, India is identifying researchers from non IFFTI institutions who presented at IFFTI 2024.
- Dr Deirdre Sato, Fashion Institute Of Technology, USA. and Circe Henestrosa, Lasalle College Of The Arts, Singapore. Are approaching institutions in South America.
- Mr Norio Nakanishi, Bunka Gakuen University, Japan. Asia. Is discussing membership with Koran College of Fashion Design, a research institute in Japan.
- Laura Washington, FDS TAFE NSW, Australia. Is approaching Curtin University, Perth, Australia and Queensland University of Technology, Brisbane, Queensland.
- Professor Margo Barton is discussing membership with Massey University, Wellington, New Zealand, and reaching out to the University of Johannesburg, Johannesburg, South Africa. Auckland University of Technology, Auckland, New Zealand has also indicated an interest in joining.

Any questions and comments?

Thank you.